

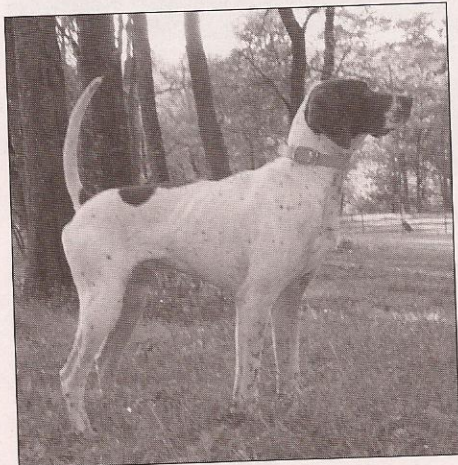
York Pointer and Setter Club

By MERV EISENHART

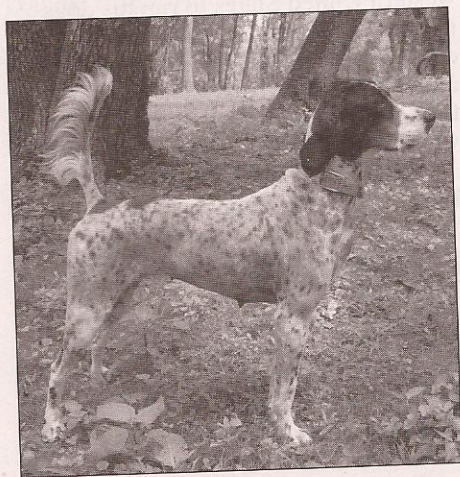
THE York Pointer and Setter Club held its spring trial April 17-18 on the club grounds at Rossville, Pa. After a long winter everyone enjoyed a beautiful spring weekend.

This was the first trial since the new fence was installed on the top of the property. No dogs were lost thanks to Steven Gruber's great job.

Connie Mensch was again in charge



ERIN'S BOXCAR WILLIE
First in the Open Shooting Dog Stake



SUKARA'S COME HOME JESSIE
Second in the Amateur Shooting Dog Stake

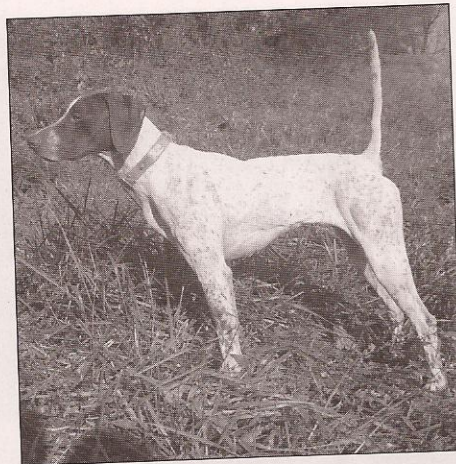
of the kitchen serving breakfast, lunch and dinner Saturday night.

Thanks to our judges — Mike Fox, Frank Williams, Jim Wilkinson, Connie Riley and Jane Donze.

Thanks to trainers Mike Tracy, George Tracy, Jeanette Tracy, Jim Heckert and Dom Preite and all the amateurs who helped to make our trial a success.

Also thanks to bird planters Steve and Daren Boyer.

In the Open Shooting Dog, Erin's

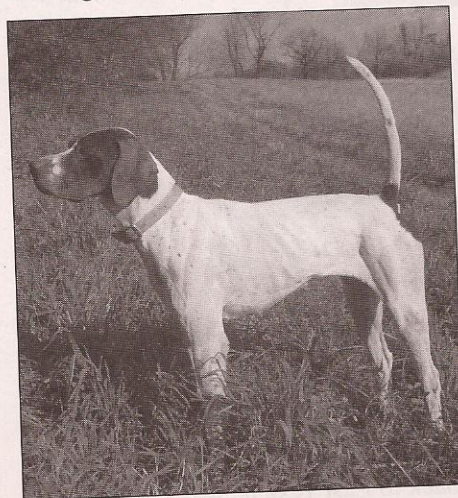


MT. VIEW DECISION MAKER
First in the Open Derby

Boxcar Willie was first with six finds, easy to handle and excellent style and bird location on a back. Enhancement Alice June (Jeanette Tracy), owner Tom Hance in the gallery, had five finds and a good race. Bluebell Sadie (Jim Heckert), owner Odie Adcock in the gallery, placed third with six finds and a back, stylish on point and hunted to the front.

In the Open Derby, Mt. View Decision Maker was first for handler Jeanette Tracy, proud owners Wayne and Gail Stover riding in the gallery. She had four finds, handled well and looked like a shooting dog. Maple Valley Cowboy, second, had four finds, a good forward race, running the edges well. Nicky Guada (M. Tracy), third, had five finds, hunted hard and stayed to the front.

The Amateur Shooting Dog had 25 entries, one of the largest entries in recent years. First was Bluebell's Double Good, owned by George Ekdahl. With some 70 years of field trialing this is the first pointer I can remember George campaigning. Double Good ran a strong race with two finds and a back.



ENHANCEMENT ALICE JUNE
Second in the Open Shooting Dog Stake

Sukara's Come Home Jessie, handled by Ted Foust, had four finds and a good race. R. B. Powell handled his White Spider to third with three finds, an unproductive with a medium race.

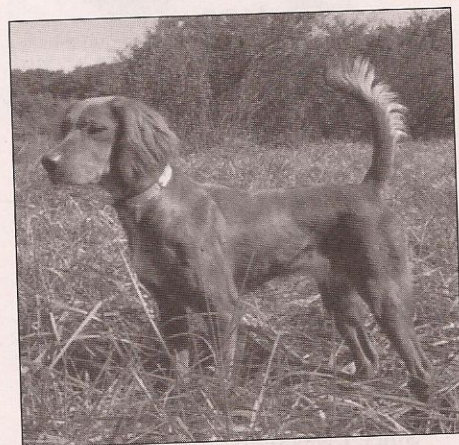
In the Amateur Derby, Roger Boser's Redstone tallied six finds and a strong race. Maple Valley Bull had seven finds and a back. Youtoo was third with several finds and a good race.

Rossville, Pa., April 17 — One Course
Judges: Michael Fox and Edwin F. Williams
OPEN SHOOTING DOG — 22 Pointers and 2 Setters

- 1st—ERIN'S BOXCAR WILLIE, 1596400, pointer male, by Erin's Tin Soldier—Twin Lakes Savannah. Charles Gatuso, owner; Mike Tracy, handler.
2d—ENHANCEMENT ALICE JUNE, 1605997, pointer female, by Calico's Thrillology—Great River Girl. Tom Hance, owner; Jeanette Tracy, handler.
3d—BLUEBELL SADIE, 1559623, pointer female, by Richfield Bodidlee—Crossroads Sue. Odie Adcock, owner; Jim Heckert, handler.

Judges: Michael Fox and Jim Wilkinson
OPEN DERBY — 7 Pointers and 1 Setter

- 1st—MT. VIEW DECISION MAKER, 1611860, pointer female, by Calico's Thrillology—Cassique's Blue Label. Wayne & Gail Stover, owners; Jeanette Tracy, handler.



REDSTONE
First in the Amateur Derby

- 2d—MAPLE VALLEY COWBOY, 1605655, pointer male, by Strut—D's Elhew Shadow. Merv & Arlene Eisenhart, owners; Merv Eisenhart, handler.
3d—NIKY GUADA, 1607887, pointer female, by Stone Free—Annie Lennox. Joe McHugh, owner; Mike Tracy, handler.

Judges: Jane Donze and Connie Riley
AMATEUR SHOOTING DOG — 25 Entries

- 1st—BLUEBELL'S DOUBLE GOOD, 1612102, pointer male, by Prairie View Chad—Nemaha Admiration. George Ekdahl, owner; Merv Eisenhart, handler.
2d—SUKARA'S COME HOME JESSIE, 1585576, setter female, by High Mark—Sandland Bell. Claire Gross & Ted & Joan Foust, owners; Ted Foust, handler.
3d—WHITE SPIDER, 1580719, setter female, by The Welshman—Harnessed Wind. R. B. Powell, owner and handler.

AMATEUR DERBY — 3 Pointers, 3 Setters and 2 Irish Setters

- 1st—REDSTONE, 1611023, Irish setter female, by Breakstone—Applebee. Roger W. Boser, owner and handler.
2d—MAPLE VALLEY BULL, 1605654, pointer male, by Bulltown—Crossroads Sue. Merv & Arlene Eisenhart, owners; Merv Eisenhart, handler.
3d—YOUTOO, 1610607, Irish setter female, by Aiken—Solitaire. Roger W. Boser, owner and handler.