

July 69

# the Flushing

# Whip

Published Monthly by the





# THE FLUSHING WHIP

Published monthly by the NATIONAL RED SETTER FIELD TRIAL CLUB,  
a non-profit corporation of the State of Delaware  
MEMBER, THE AMATEUR FIELD TRIAL CLUBS OF AMERICA  
and THE ASSOCIATED BIRD DOG CLUBS OF OHIO

President.....Dr. Roger W. Boser, 369 Hillcrest Road, York, Pa. 17408  
Vice Pres.....William I. Cargo, RED No. 1, Chillicothe, Ohio 45601  
Sec.-Treas.....Joe W. Hamilton, Box 538, Edgefield, S. C. 29824  
Editor.....Larry Crum, 133 Hampton Roads Ave., Hampton, Va. 23361  
DIRECTORS: (1969-1970).....E. J. Lewis, Jack Ulrich, David Hasinger,  
Cliff Bean, Tom Moffat, Dwight Haddock,  
Dave Peet, William Cargo, Larry Crum

The Flushing Whip is available only to members of the National Red Setter Field Trial Club, Inc. Publication, which is supported by membership dues, is a service but not an obligation of the Club's officers. A copy of each issue is mailed to every member in good standing.

Advertising rates: Full page (8½" x 12"), \$7.50; half page (6" x 8½"), \$5.00  
display advertising submitted ready for photographic reproduction. A twenty per cent discount is offered on subsequent issues. Reader ads, unclassified, will be inserted free as a service to members. Submit copy and payment to the editor. Copy deadline is the twentieth day of the month prior to month of publication.

This is your invitation to participate in the purest challenge in sportsdom. Join us in the National Red Setter Field Trial Club. Enjoy the successful revival of the Irish Setter as an effective running companion by becoming a part of it. Annual dues of \$7.50 (Jan. 1 to Jan. 1, \$4.00, July 1 to Jan. 1) include a subscription to the club publication. There are no formalities, just fill out and mail this application blank.

Joe W. Hamilton,  
Box 588  
Edgefield, S. C. 29824

I apply for membership in the National Red Setter Field Trial Club. I am not currently under suspension of the Amateur Field Trial Clubs of America, any kennel club, stud book or dog organization, nor have I ever been.

Name: .....

Address: .....

VOL. XV

THE FLUSHING WHIP

JULY 1969

NO. 7

EDITORIAL

Perhaps the time has come to put a check rein on the verbatim publication of members opinions in the "Sound-off" column. We hope, however, that this will not be necessary. While we continue to believe that open expression of opinions is healthy for the Club, the freedom in expressing them must be impersonal and tempered with discretion. Nothing will be served by creating hard feelings. This approach wins no one to a particular viewpoint. Readers, likewise, must not take the opinions expressed as personal attacks. While it is doubtful whether anything will be settled by the dissension anyway, it does bring our differences and problems to the fore. We have the machinery for making rules and setting standards, and for changing them where such is the case. When it comes to what kind of dog to breed, training methods, and handling procedures, we will probably continue to stick with our individual convictions and try to prove our point as we compete. Much depends on what our goals may be. As for the Clubs long range objectives, it is the consistent winners in all-breed competition that will make us believers and we should take a lesson from them. After all, isn't this what our founding fathers had in mind?

We continue to believe that the Flushing Whip, our communication media, is the main force that supplies the unity to our far-reaching membership. It also promotes our objective and advertises the Club. The foregoing is a word of caution so that it will remain so. Enthusiasm has never been higher. This month our membership passed the 200 mark - now standing at 209, including seven husband and wife dual memberships and the four honorary ones. This is nearly double that of a year ago. People are working for the NRSFTC and its objectives from Canada to New Mexico and from California to Nova Scotia. Now let's produce. Vote for Askew's Carolina Lady and Ned LeGrande in the American Field Hall of Fame nominations. Then get those entries in for the Fall Trial November 8-9 at Kildeer Plains, Ohio. We'll see you there!



(Direct all inquiries to Dr. Roger W. Doser, 369 Hillcrest Road, York, Pennsylvania 17403)

Proper feeding is unquestionably the most important single factor in raising a healthy dog. Conversely, improper feeding is the direct cause of many diseases.

What a dog eats is primarily what he has been trained to eat. Frequently, spoiled dogs require considerable fasting before they are re-trained to eat what is good for them.

Many canine nutritional experts recommend the exclusive feeding of meal type dog foods of which there are many well tested and proven brands available. The ingredients include meat, organs, bone, and often fish, with just the water removed. These meals are dependable, nutritious and complete. Another advantage of feeding exclusively meal is that each feeding is consistent, i.e., there is a balance of all components in every cupful of food.

Canned foods are also complete and are frequently more desired by the dog but they are not necessarily more nutritious. You pay two to three times as much for these as for some makes of dry meal for the convenience of having water added. Some kibbles and dog biscuits are incomplete as far as a regular diet is concerned because they are composed mostly of baked starches. These should be supplemented with meat and vegetables and some with vitamin and mineral concentrates.

If you are feeding raw or cooked meat there is little need of adding fat. If the diet is of meal or other starchy substances, animal fats should be added to provide a proper balance.

**FEEDING FALLACIES:** The following mistaken notions are held by many persons who should be better informed: Dogs must have raw lean meat. Dogs cannot digest starch or sugar. Garlic eliminates worms. Dogs should not gulp their food. Dogs must chew hard foods such as bones to keep their teeth sound. Different breeds of dogs require different foods.

These and many other fallacies have no truth in them. Dogs thrive on cooked or dried meat as well as on raw. Dogs digest starch, provided it is cooked, and sugar as well as we do.

-2- (Continued on page 27)

FIELD TRIAL HALL OF FAME

Nomination Voting Extends from July 19 through August 2

The voting will soon begin. Nomination balloting in the 1969 election for the Field Trial Hall of Fame starts on Saturday, July 19. The voting period will be confined to fifteen days, and the approximate two-week period has been used for a number of years. Readers may nominate their candidates starting July 19 and all ballots received postmarked to Saturday midnight, August 2, will be counted. Votes must be submitted on the official ballot forms which are published in the AMERICAN FIELD. These ballot forms will appear in the issues of July 19 and July 25.

Voters write in the names of their candidates on this ballot form and send the nomination form to the American Field Publishing Company, 222 W. Adams Street, Chicago, Ill. 60606. This must be done so that it will bear a postmark prior to midnight, August 2. It is suggested that ballots be submitted as promptly as possible. Some readers have preferred to wait until toward the end of the voting period before sending in their ballots, but the recommendation is to get the votes in as quickly as possible.

Because no other ballot form is acceptable, be sure to use those published in your issues. The official ballot appears twice so that if more than one member in a family wishes to submit candidates, it is possible to do so. The present voting arrangement was established at the behest of field trial clubs and bird dog fans who emphasized that this procedure would mirror the real choices of the active field trial fraternity.

OUR NOMINEES ARE:

\*\*\*\*\* ASKEM'S CAROLINA LADY - NED LeGRANDE \*\*\*\*\*

NEW MEMBERS

- Charles W. Fendrich III Louise P. Flanders Jack Riley
- 663 Coy Lane R.F.D.#2 816 Clarence Dr.
- Chagrin Falls, Barnwell, S.C. 29812 Waco, Texas 76700
- Ohio 44022

(Continued page 28)



(Send your questions to The Whip. We'll attempt to get professional advice.)

What do you do if your dog is backing another and its handler can't produce a bird - wait precious minutes or can you send your dog on to find its own birds? Or what if you are the handler that can't produce the bird? (Fran Rogers)

Ed Schnettler says: If your dog is backing and another handler is taking more than normal time in flushing, I suggest asking one of the judges for permission to take the dog on. For the handler who is unsuccessful in flushing, his hope is with God. Suggest he, after a complete attempt, ask permission to have the dog relocate.

This column may be only adding to the dissention, mentioned in the editorial. Realizing that opinion varies, and that there are several ways to do most tasks, few trainers or handlers will stick their neck out in giving the final word on a subject. If anything, they will give only their opinion in a given situation. It has been suggested that questions to this column be referred to books on the subject - William Brown's book on training, or Wehle's, Brown's Field Trial Procedures, or AFTCA Running Rules, etc. Since it would be senseless for the Whip to quote the books, even if we had them all in our library, we encourage you to refer to these sources. Experience is a great teacher too. However, The Whip does want to help and doesn't mean to discourage questions. If other sources fail, send them in. We will publish them, ask for our readers to supply their answer, and print their replies.

THE MAILBAG

FROM HERM DAVID - I received your note and a copy of the minutes of the 1969 annual meeting of the NRSFTC just this morning and I couldn't be more honored or more pleased. Election to honorary membership in the NRSFTC places me in undeserved company with some true Greats. Please convey my thanks to all the membership. However, I am not, in any sense, retired from "The

-4- (Continued on page 9)

In the "Interesting Members" category we thank Ed Schnettler for forwarding two articles. The first concerns HAROLD "POP" BRINN, who was one of three Beaufort-Hyde (N.C.) area star baseball players of yesteryear, all born before 1891, who were honored by the B-H News at the Holiday Inn in Washington, N.C. "First baseman Harold Brinn played regularly for Swan Quarter as long as that great team was in existence." Sorry we can't reproduce the photo of Pop. The second is quoted from the Kansas City Star Field Trial Notes Column: The Irish Setter lost one of its best friends and supporters Saturday when the Stady Great kennel of Dee Johnson, Old Lee's Summit road, southeast of Independence, was closed out at a dispersal sale. Johnson, who now is living with a son, Don, in Bartlesville, Okla., was present for the sale which included all remaining setters in the kennel, the house, furnishings, and 23 acres of ground. He returned to Bartlesville after the sale. Two adult dogs were purchased by local buyers. The land and house went to a close-by commercial firm. A decade ago Dee and Kathryn Johnson started upgrading the hunting strain of Irish Setters in the Kansas City area. Their main stud dog, Shawn, was the biggest running Irish in the area. The Johnsons imported new Irish blood, upgraded the hunting instincts, and were a founder of the Santa Galigon Irish setter club that a few years ago was one of the largest field trial clubs in the area. Its membership covered a 100-mile radius. Kathryn Johnson died about four years ago. Ill health cut down the activity of Dee Johnson. The club honored them with the creation of one of its top awards-the Dee and Kathryn Johnson trophy. (Note: Member Mrs. Arthur E. Mix of Dunn Loring, Va. is a daughter of the Johnsons.)

No doubt you read in the June 28th Am. Field of our public relations man (also Sec/Treas.) visiting their offices. A nice plug for the club too, worth repeating. "A most interesting visitor to the editorial offices recently was personable Joe W. Hamilton of Edgefield, S.C., Secretary-treasurer of the National Red Setter Field Trial Club. The organization has been accomplishing important strides in recognition of the Irish Setter's qualifications as a bird dog rather than an image of an extraordinarily handsome bench specimen. Indeed, the purposes of the Club in-

-5- (Continued on page 20)



**JOHN LANFERNAN:** A few letters have prompted me to "Sound Off" and hope I don't offend anyone. I like what Bob Schweiger says about having a running red setter if we are to win. Some of our members are afraid of losing an Irish shooting dog to the all-age, and having nothing more than re pointers. Would like to point out that the pointers and setters have their all age dogs and shooting dogs as well as having foot hunting dogs. As long as there are field trial red setters there will always be a hunting red setter. We are defeating our goal as a field trial club if we don't want an Irish capable of winning wherever he is put down. We have to have an Irish that has enough run to beat any pointer or setter if we are going to win and winning is the name of the game. We all could get pointers if all we wanted was to win trials but most of us joined the purest Challenge because we love the Irish and its a real thrill to win with the breed one loves. Let us not begrudge the big running Irish nor their owners because they enjoy a dog that will reach to the limits and has the ability to hold his own with any dog. These dogs will always be the minority of the breed. I don't think we have to mass produce Irish, until we have as many running as pointers, in order to win consistently because of the law of averages. As Guy Beck points out "Some say the setter is outnumbered yet it takes only performance to win." As for me I enjoy seeing a red setter run to the limits and slam into point, to see his desire to find birds become so burning that he'll run as far and long as necessary in order to find them. Let us not be breed blind and tell ourselves that the Irish aren't suppose to run wide and point with a stylish intensity because this might have been the characteristic of red ones many years ago. Times have changed, there are less birds. And thanks to the efforts of LeGrande a running, intense red setter is here today. His breeding program changed the Irish to a new Irish to meet the demands of the day. I will close with some final words of Guy Beck; "There are too many breed-blinded fanciers who are willing to accept setter faults and justify their acceptance with the statement setters are supposed to be that way." LeGrande brought change to the Irish let us continue this work and continue to change, better, and breed as faultless an Irish as possible.

-6- (Continued on page 23)

This is the year for all members to really get behind the nomination of Askews Carolina Lady for the Hall of Fame. The recent increase in membership gives us the numbers we need. Old Lady is deserving of this for what she contributed to our field strain and also this is an excellent way to get breed publicity. I encourage every member to use the ballot in the American Field and vote for her. At the same time I also encourage you to cast your vote for Ned LeGrande. In all frankness if it weren't for him we probably wouldn't have many Red Dogs worth talking in the field.

I've been getting all kinds of heat recently in regard to the standards our trials are to be judged on. Some people feel us adopting a standard is unnecessary and will serve only as an insult to our trial judge's judgement and others feel our standards are too weak and are different for each trial. I wish to state what the club position is on this to clear up all this needless hot air exchange.

The published and adopted standard (see page 8) I feel are very well phrased and clarified. Simply reading them would clarify much of the misunderstanding - they are so worded that a judge has no reason to feel his judgement is being infringed upon but yet there is enough restriction so that the handler can know what type of dog is desired. I'll enlarge on some of the points.

The dog we are looking for is classified as a Class Horse-back Shooting Dog. There may be some variation geographically how this is interpreted so to define further - the pace is to be set at a flat walk for the horse. The dog should range diligently but show a definite willingness to handle. This eliminates reckless riding and scouting to try and steer a runaway dog around the course. Scouting is not allowed at any time except in those cases where a dog is suspected to be on point. This scouting is not to be excessive. Range is primarily determined by the terrain. If a wide open field is facing the dog he should show the boldness to range widely when visibility will allow such. No pottering is desired. In more confined cover the dog should hunt intelligently always maintaining reasonable contact with the handler without scouting. This then is a class horse-back shooting dog. Our standards are not all-age standards.



NRSFTC CHAMPIONSHIP - DESIRED PERFORMANCE STANDARD

(Reprinted from February, 1969 Flushing Whip)

In that the declared intention of the founders of the NRSFTC was to return the Irish Setter to the field, the Champion desired should be one that could reasonably be expected to produce offspring that would make capable gun dogs. Thus the Ch. should be a Class Horse-back Shooting Dog.

As to specifics which will largely eliminate misunderstanding due to different interpretations of the term "Class Horseback Shooting Dog" it is suggested that the following points be kept in mind to establish the standard of performance:

1. The judges and marshals shall set the pace at a flat walk. The mount shall thus be used only as a means of conveyance, not as an aid in handling.
2. No scouting is permitted in any stake except that a person, with the permission of a judge, may be designated to go and see if a dog is on point at a specific location.
3. Backing: Dogs should back on sight. Call backs mandatory in the event circumstances do not afford opportunity during initial brace for a back. It is also mandatory that a judge order a dog up ~~if~~ that dog, in the opinion of the judge, demonstrates conclusively that he refuses to back his brace-mate on sight.
4. The Champion must be shot over. Shot to be fired by handler of pointing dog only, with gun of not less than 32 calibre.
5. Handlers should make minimum use of voice and whistle and in no way interfere with competing dog or handler.
6. Extreme range will be considered undesirable, but range should be adjusted according to cover and character of country. Desire to please handler should be evident.
7. The Ch should display the following qualities: an intense desire to find birds; a keen nose; ability to locate by body scent; staunchness; intensity; positiveness; style on point; a merry way of going; and polished manners.
8. To clarify the handling of birds, the point should indicate location and behavior of the bird. Relocating and tentative points permitted as normal in the hunting of wild birds. However, this is in no way meant to condone an "un-productive." Handlers declaring point or attempting to flush are expected to produce

-8-

(Continued on page 21)

The Mailbag - Cont'd from page 4  
Purest Challenge." This strange profession I'm in takes me to many fine trials -- but it creates circumstances which virtually prohibit my running a dog. I wish I had more time to give to the NRSFTC--maybe sometime in the future. In the meantime, if you'll continue to bill me for dues I'll be glad to pay up. I know the NRSFTC can use the money..

Dear Herm: Yes, but we figure your service to us through the years more than pays the bill. (Ed.)

From Bob Watts - "I sold a pup to Jerry Haines in Minneapolis who saw my ad in a copy of The Whip brought to a trial by a club member-proving that non-club members do get some circulation. It would seem that those who live reasonably nearby a person who has expressed interest in our Club could make an effort to meet or talk with them personally. Part of the failure to recruit them is ours for not providing some support through personal contact when it's possible.

Dear Bob: Hope all members will do this. Many already are (Ed.)

From Joe Hamilton - Have arranged with Bill Brown to enclose our brochures with all Irish registrations, free of charge for the present at least! Also submitted the article on Askew's Carolina Lady to the American Field.

Dear Joe: Our thanks, should be a boost to the Club and to our nominee. (Ed.)

From Marge Moffat - We have a new pup, an English Setter out of Tishamingo and he had been calling her Flo so I told Tom she should be "Flo mingo" since she's a bird dog. (Awful, eh?)  
Dear Marge: Yes, but good luck and best wishes. (Ed.)

From Craig Opel - I read with great interest in the May issue of all the promising pups coming up. I was particularly proud to see Wm's Lady Cassandra in the top five of the Duke Trophy. She is out of my Missy Ember and Saturday Night Ed and was only 9 month old in May. She is a very big runner and holds her own with pointers. I have her brother that got started a little later but will be heard from this Fall. I'm planning on this same mating again this month and hope to place more of this litter with field trialers. Keep up the good paper. Dear Craig: Will look for more big runners. (Ed.)

-9-



DUKE TROPHY STANDINGS - 7/1/69

(Send all reports of wins to David J. Stem 4710 Village Drive, Fairfax, Virginia 22030)

Autumn Hills Penny-	- - - - -	-Dr. H. C. Bloom-	- - - - -	-373
County Clare's McKenna-	- - - - -	-Al & Fran Rogers-	- - - - -	-181
Autumn Hills Count-	- - - - -	-Jim Flythe-	- - - - -	-156
County Clare's Spud Murphy-	- - - - -	-E. J. Lewis-	- - - - -	-113
Dandy's Judy-	- - - - -	-Max Freer-	- - - - -	-104
D'Mar Joyfull Maggie-	- - - - -	-Bob Pierce-	- - - - -	- 96

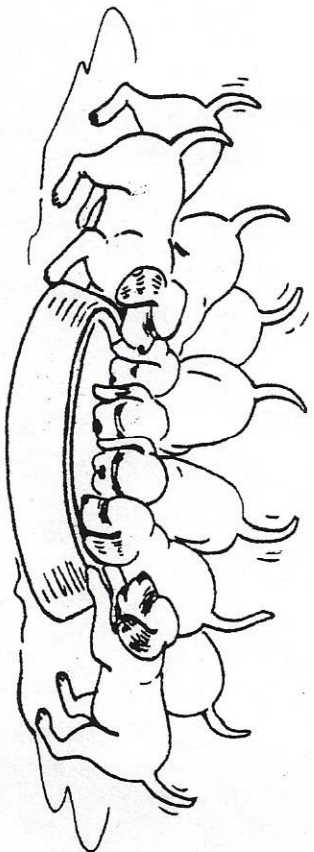
NOTE: The above standings are unofficial as they are compiled from owner/handler reports before it is possible to crosscheck with published reports in the American Field. As results are published in the Field, a validation is performed and if a discrepancy exists between owner and Field reports, an appropriate adjustment to the standings is made.

RULES

1. FDSB Recognized Trials.
2. Points to be compiled from March 1 to March 1.
3. Report of win must be made to the David J. Stem (Address above) within 1 month of win, or not eligible.
4. Responsibility of dog owner to get in report and owner must be a member of NRSFTC in good standing.
5. Report of top 6 dogs to be published in Whip each month.
6. Points to be figured by following base figure.
  - A. All-Age Wins: 1st - 6, 2nd - 5, 3rd - 4.
  - B. Shooting or Gun Dog Wins: 1st - 5, 2nd - 4, 3rd - 3.
  - C. Derby Wins: 1st - 4, 2nd - 3, 3rd - 2.
  - D. Puppy Wins: 1st - 3, 2nd - 2, 3rd - 1.

Points to be determined by multiplying number of entries by base figure. (For example - a third place All-Age win with twenty (20) entries would be figured by multiplying 20 x 4 - giving 80 points.)
7. Award to be made at annual Spring trial in April. Rotating trophy with permanent award to be kept by owner.

VOTE FOR ASKEW'S CAROLINA LADY



# THEY ARE HERE!

These beautiful dark red bundles of energy whelped May 18, 1969 are strong in Carolina Lady-like Jack Kendrick blood as well as that of Ch. & FT. Ch. Moanruad Ambassador.

The sire is FT. Ch. Bird Comet of Ardee (Dual Ch. Moanruad Ambassador—Ch. Bird Dixie of Ardee). The dam is Clarkadia's Dixie of Ardee (Valli Hi Counselor—Gun Girl of Ardee). AKC & FDSB.

MRS. G.L. CLARK, RT. 1, DEATSVILLE, ALA. 36022  
NEAR MAJOR AIRPORT - TEL. (205) 285-4958



# BOARD YOUR DOG

at the

## English Setter Club Kennels

ON MEDFORD - MOUNT HOLLY ROAD  
ROUTE 541, NEW JERSEY

CLEAN, AIRY, INDIVIDUAL KENNELS

(Heated in Winter)

ALL BREEDS

GOOD CARE and FEED

RATES \$2.00 per day

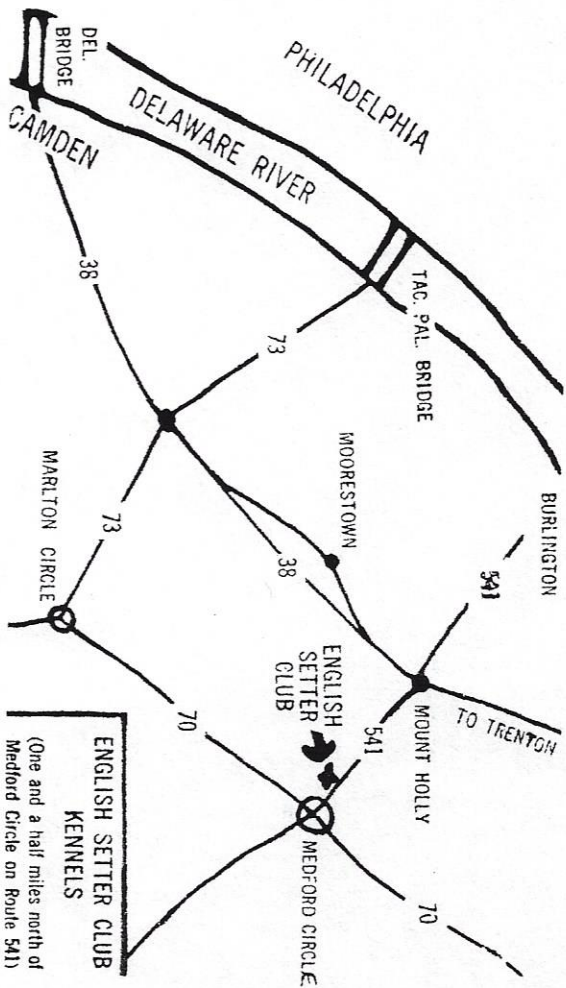
For Information Call:

\$40.00 per month

Mr. A. HOWEY

Special rates to members

Farm Superintendent  
654 - 4618



### RED COVERS AT STUD

#### CALIFORNIA

FLD.Ch. VALLI HI COUNTRY - AKC & FDSB Reg. Whelped 2/9/61. Has produced County Clare winners since coming to the Coast in 1966. Many placements in Irish and All-Breed stakes.

COUNTY CLARE'S COUNTRY SQUIRE - AKC & FDSB Reg. Whelped 10/11/65. Fld.Ch. VALLI HI COUNTRY ex. FLD.Ch. THE MIGHTY FAWN. Placements in Irish and All-Breed stakes. Big runner with high tail.

COUNTRY CLARE'S COUNTRY LAD - AKC & FDSB Reg. Latter brother of COUNTRY SQUIRE. Many placements in Irish and All-Breed stakes. Runs big with high tail.

Contact E. J. Lewis, 1600 San Remo Drive, Pacific Palisades, Calif. 90272 Tel. 213-473-1335 or J. Stanley Head, P.O. Box 71, Oakdale, Calif. 95361 Tel. 209-847-0706

#### ILLINOIS

CLANGY O'RYAN - SCHNETT'S LITTLE RED ex. SCHNETT'S KATE Pat Ryan, Box 663, Livingston, Illinois 62058

STAR FLASH O'GESSER - KELLY KING of the KNIGHTS ex. PATRICIA Nelson M. Nungesser, FLD#2A, Highland, Illinois 62249 Telephone 618-654-3533

#### INDIANA

HOUSTON'S COPPER - SCHNETT'S LITTLE RED ex. AUTUMN HILLS PENNY. Whelped 4/23/67. A stylish, big running Irish who is also a very strong bird dog. Contact R. H. Harrell, 11 Westwood Drive, Richmond, Ind. 47374 Tel. (days) 317-966-2506

#### KENTUCKY

SERGEANT DAN DALY - Sire of CHAPULTEPEC (Fall '68 Runner-up) Glenn Curtiss, Rt. # 1, Box 2, Greemp, Kentucky 41144 Telephone 606-473-9982

KENTUCKY REDHIRD - MR. O'LEARY ex. DWGESS OF STARLIGHT \$50.00 Judge Robert M. Coleman, 633-13th Street, Bowling Green, Kentucky, 42101 Tel. 502-842-5501 or 502-842-6626

(Continued)



FIVE (5) IRISH SETTER PUPS FOR SALE

DUAL REGISTERED

WHELPED 5/29/69

PUPS  
THESE PUPS SHOULD  
HAVE THE RUN, CLASS  
AND BIRDSENSE THAT  
WILL MAKE THEM  
FIELD TRAIL WINNERS.

TAYLOR'S WHIRLAWAY CHIEF

CHIEF HAS MORE THAN FIFTEEN  
OPEN SHOOTING DOG AND ALL  
AGE PLACEMENTS AND IS THE  
ONLY IRISH SETTER QUALIFIED  
FOR THE SHOOTING DOG CHAMP-  
IONSHIPS.

WILLIAM'S TINY TINA

TINA IS MY OWN PERSONAL GUN  
DOG WITH GOOD COLOR AND CON-  
FORMATION. SHOT FIFTY BIRDS  
OVER HER POINTS LAST SEASON.  
DERBY BROKEN.

\$100.00 EACH OR \$75.00  
TO FIELD TRIALERS.

CONTACT:

WILLIAM WITTGAN  
1409 LAKEWOOD DR.  
MENDOTA, ILLINOIS  
61342

PHONE: MENDOTA 7218

BUY AN IRISH SETTER PUP  
ENJOY THE SUCCESSFUL REVIVAL OF THE IRISH SETTER AS A CLASS TRIAL DOG AND EFFECTIVE GUNNING COMPANION  
THE PUREST CHALLENGE IN SPORTSDOM



RED SETTERS AT STUD

MINNESOTA

AUTUMN HILLS RUFFIAN - Sire AUTUMN HILLS DUKE ex. BLARNEY ROCKS

FIAME - FDSB & AKC Reg.

littermate to Miss Colleen of Kaymar.

Contact Robert S. C. Peterson, 6024 Kaymar Dr. Minneapolis, Minn. 55436 or Ed. Schnettler, Clear Lake, Minn. 55319

SATURDAY NIGHT ED - JIMMY K ex. SCHNETT'S TARA, FDSB Reg.

Owner: J. T. Flythe, Raleigh, N. C.

Correspond with Ed. Schnettler, Rt. 1, Clear Lake Minn. 55319

MISSOURI

D-MAR'S WHIRLING REBEL - AKC & FDSB Reg. Solid red, whelped 8/22/64 \$50.00. Heavy with Ike Jack Kendrick and Askey's Carolina Lady breeding. One free return on the same or other bitch of breeders choice if female fails to whelp or has 3 pups or less. Orank and Delta airlines serve Springfield. Dwight Haddock, Rt. 10, Box 725, Springfield, Mo. 65803.

NEW YORK

DEERFIELD'S SEAN O'RIAN - AKC F. T. Ch. KOPPER KEY HENNESSEY

ex. COUNTY CLARE'S BIDDY

Faunt L. Ekey, 104 Gordon Rd., Spencerport, N. Y. 14559  
Telephone 716-352-6251

NORTH CAROLINA

AUTUMN HILLS COUNT - AUTUMN HILLS DUKE ex. AUTUMN HILLS AMBER, whelped 4/8/62. FDSB Reg.

SCHNETT'S LITTLE RED - SUHAMSTEAD NORSE D'OR ex. LADY'S FINAL FLING. Whelped 7/25/60. AKC and FDSB Reg.

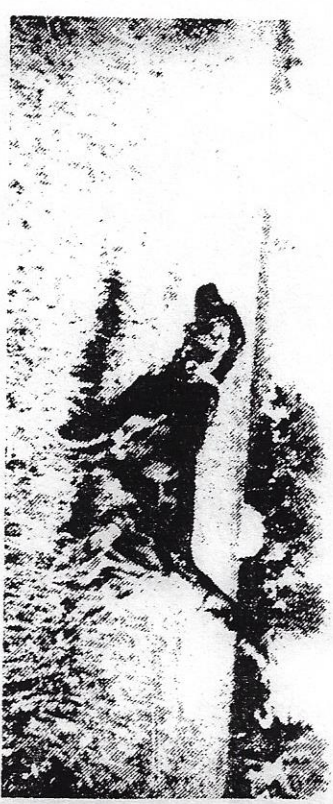
DR. MICKEY BEAN - MOFFAT'S APACHE BILL ex. MILLER'S TIGER LILY. FDSB Reg.

Contact J. T. Flythe, Barton's Creek Kennel, Route 7, Box 374, Raleigh, N.C. 27609 Tel. 919-828-8386

**Barton's Creek Kennel**

J. T. FLYTHE / OWNER

ROUTE 7 / BOX 374 / TELEPHONE 919-828-8386 / RALEIGH, NORTH CAROLINA



*AUTUMN HILLS COUNT*

STUD DOGS RADIOGRAPHICALLY TESTED AND FOUND FREE OF HIP DYSPLASIA

Autumn's Hill Count

Saturday Night Ed

Schnett's Little Red

Stud Fee \$100.00

\*\*\*\*\*  
PUPPIES BY THE ABOVE SIREs NOW AVAILABLE



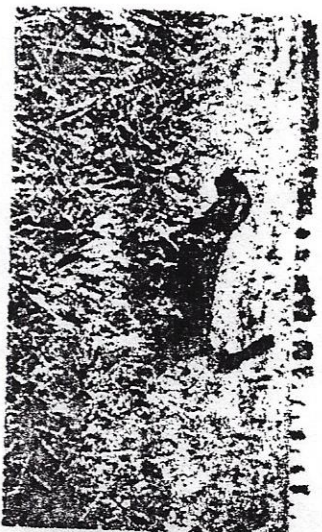
# County Clare Irish Setters

IN NINE STARTS

THEIR RECORD IN THE NATIONAL RED SETTER FIELD TRIAL

CLUB CHAMPIONSHIP STAKES

SPRING 1964	Runner-up	Mighty Fawn
FALL 1964	Won National Championship	"
SPRING 1965	Winner (Championship withheld)	"
FALL 1965	Won National Championship	Co. Clares Shandy
FALL 1966	Won National Championship	"
SPRING 1968	Runner-up	Vallt Ht Country
FALL 1968	Won National Championship	"



STUD SERVICE

For information phone or write:

E. J. Lewis  
1600 San Remo Drive  
Pacific Palisades, Calif.  
213-473-1335

or  
J. Stanley Head  
P.O. Box 71  
Oakdale, Calif. 95361  
209-847-0706

## UNCLASSIFIED

PUPS: By Barnhouses Rebel Rouser ex Barnhouses Red Queen. Males \$75, Females \$85. Offered by Barnhouse Kennels, Home of the Hunting Irish Setter. Bob Kerans, R.R. #1, Newton, Ill. 62448  
Tel. 618-783-3860

PUPS: 5 males and 4 females out of the best field trial blood line. Linebred to Askew's Carolina Lady and tracing back to her nine times, Ike Jack Kendrick five times. Many Champions in pedigree. Sire in Canada with Fred Bevan is a big runner with all the natural traits. Dam stylish and very birdy: John Larferman, Red Star Kennels, Box 17, Gray, Iowa 50110.  
Tel. 712-563-3004

PUPS: Farm raised. By Moanruad Norse D'Or, a grandson of Moanruad Ambassador and Sulhamstead Norse D'Or. Both sire and dam excellent hunting dogs. Pups available year round. Mike Maes, Rt. 3, Osborne, Kansas 67473

PUPS: Whelped July 4th. Winningest lines in Irish Setter history. All pups are a gamble, why not cut down the odds and get the best breeding? Sired by Double National Ch. County Clare's Shandy (Ch.Mr. O'Leary ex. F.Ch.Windridge Tammy) Dam Russet Meadow's Jealousy (Ch.Mr. O'Leary ex. F.Ch.Miller's Tiger Lily) FDSF Reg. 13 field champions in 3 generations. D. J. Garman, 908 Cedar Springs Terrace, Arlington, Texas 76010.  
Tel. 817-277-5033

PUPS: By Weblaine Desota Red ex Endsley's Kate. Brian Endsley, 449 E. Maunola, Glendora, Cal. 91740 or Janet Ruel Hunter, 379 S. College, Claremont, Cal. 91711.

FEMALE: Whelped 2/25/67. AKC & FDSB Reg. Sired by Vallt Ht Counselor ex Murcrest Mollie Mischief (Ike Jack Kendrick ex Gay Colleen.) Excellent shooting dog. NRSFTC Fall Derby Winner 1968. Trained by Joe Cannon, as was her sister who I shot many pheasant over last year in Penna. Terms of breeding agreement. Lewy Crum, Box 168, Newport News, Va. 23607  
Tel. 703-723-9196.

RETURN ROTATING TROPHIES TO THE FALL TRIAL



Here and There - Cont'd from page 5  
cludes promotion of the Irish Setter afield and developing red dogs capable of holding their own as top flight bird dogs in field trial competition with pointers, English Setters, etc. Joe does get around. He also reports visits with the Bosers, the Ullrich's and the Hasingers. We note that he did take time to register two of Schmettler's pups, Jill and Peggy. Welcome "Qualiway" Kennels.

Speaking of David Hasinger, besides still tallying 99 out of 100 in Trapshooting, as reported in the July 6th Philadelphia Inquirer, he has been busy invading the South. As of July 1st he opened a branch manufacturing operation in Western Tennessee not far from Hernando, Miss. Three Irish Setters, "Faith", "Hope" and "Charity", bred by Ned LeGrande and owned by David will be trained at Hernando, Miss. by Dave Grubb. David hopes to establish a part time residence in Madison County, Tennessee and will welcome as visitors members of N.R.S.F.T.C. Did you know that David has another Champion? This fighter successfully defended his heavy-weight championship recently in Madison Square Garden while David and other owners of Joe Frazier looked on.

Dell and Linton Pound are now the "Landed Gentry" Potrads. They just completed negotiations for the 150 acre estate in northern Georgia that they had their eyes on. All will be glad to hear that Linton's horse, Saber, is fine again after his Hawfield mishap - hair has regrown on his leg and side. At least he was until he ate Dell's corn and beans which she has diligently watered during the drought.

County Clare McKenna, Al and Fran Rogers young male, set an enviable record between last September and this April. Mac has 14 placements in 13 trials, several in all-breed. Caused some grumbling from Pointer folks too, we understand. More power to the judges who have the fortitude to place them where they belong, even though they are in Pointer Country. One such reported in 6-14 Am. Field, page 744.

The 4/15 American Field, page 538 carried a nice write up concerning Stan Head and C. C. County Lad at the Jockey Hollow (N.J.) trial.

The 6/14 issue page 736 carries a nice picture of Dr. Bloom's  
-20- (Continued on page 23)

#### Champ Standards - Cont'd from page 8

9. Intelligent pattern of the point or subsequent relocations. birds as a result of the point or subsequent relocations. The dominant factors of course drawn, manner of salting course, time of day should be balanced by keen analysis of each dog's work.

10. The standards of the supporting stakes; Puppy, Derby and Amateur Shooting Dog; are to be the same as for the Champion. The dogs in these stakes are not expected to approach the optimum as set forth above but are to show progress and indications of having the potential of the championship qualities.

We hope the preceding will help you, not scare you away. If you have not previously been to our trials let us assure you that everyone is much more helpful, understanding and by far friendlier than you will find at other trials. We think you will find the experience good for both you and your dogs and publish the above information only to guide you in knowing the type of Irish we like to see out there!

#### FIELD TRIAL STANDARDS

By J. S. Van Wye, D.O.

For the guidance of handlers and spectators, the following standards are generally accepted as a basis of judgment of pointing dog trials. It should be understood that placements are made only by the judges who interpret the dog's conduct in the field and decide on the degree of performance or omission on the part of each dog in comparison with the other dogs entered in the stake. Congratulate the winners and Judges, you may be one sometime.

A pointing dog is a work of art and not a science; accordingly, it is impossible to apply mathematics to the judgment of a dog's heat. We should remember that the standards can only be used in considering the overall performance of the dog.

Puppy Stake: Only natural abilities taken into consideration. 1. Instinct (desire to hunt) 2. Good nose. 3. Instinct to point. 4. Good constitution. 5. Intelligence. 6. Nervous energy. 7. Good eyesight and hearing. 8. Tractable disposition. 9. Courage. 10. Good conformation, style, appearance and application.

Derby Stake: May be finished. Not a finished dog - usually.

-21- (Continued on page 22)



Field Trial Standards - Continued from page 21

- Should 1. Show some bird sense, speed, range and stamina.
  - 2. Hunt to the course, 3. Locate and point quickly and accurately.
  - 4. Be staunch. 5. Back on sight. Should not - 1. Get out of hand. 2. Bolt. 3. Cut in. 4. False point. 5. Blink. 6. Be bird or gun shy. 7. Trail. May - 1. Disregard the wind. 2. Hunt for foot scent (but not persistently.) 3. Be unsteady.
- All Age Stake: The All Age dog is the completely finished dog. Should - 1. Show class, i.e., bird sense, speed, range and stamina. 2. Hunt to the course. 3. Search up wind for body scent. 4. Locate and point quickly and accurately. 5. Be staunch. 6. Be steady. 7. Back on sight. 8. Stop to flush. Should not - 1. Get out of hand. 2. Bolt. 3. Cut in. 4. False point. 5. Hunt foot scent. 6. Blink. 7. Trail.

The dog under consideration must have and display bird sense. He must show perfect work on both covers and singles. He must be able to determine quickly between foot and body scent. He must use his brain, eyes and nose to the fullest advantage and hunt the likely places on the course. He must possess speed, range, style, character, courage and stamina . . . and good manners, always. He must hunt the birds and not the handler hunt the dog. No line or path runner is acceptable. He must be well broken, and the better his manners, the more clearly he proves his sound training. Should he lose a little in class, as expressed in extreme speed and range, he can make up for this, under fair judgment, in a single piece of superior bird work, or in sustained demonstration of General behavior. He must be bold, snappy and spirited. His range must be to the front or to either side, but never behind. He must be regularly and habitually pleasingly governable (tractable) and must know when to turn and keep his handler's course in view, and at all times keep upper most in his mind the finding and pointing of the birds for his handler.

\* \* \* \* \*  
 F. Trial C'hmm Bill Cargo Reports - Cont'd from page 25  
 now, he has 42 head of riding horses. There will not be any problems with availability of horses, anyway.  
 The area manager at Kildeer, Sturgeon, thinks that the same area will be available for field trials in 1970. This is contrary to the information circulated by the ABDCCO this spring. Should be able to find out what land will be available by Sept.

Members Sound Off - Cont'd from page 6  
 ED SCHNETTLER: I support Gerald Dible's comments, The Red Setter trials have been of vital importance in development of the red setters. We do need the breed stakes. Can attend all the all-breed trials we have time for so no purpose would be served by the Red Setter club making any effort in this respect. In regard to scouting, I disagree with Bob Schweiger. My idea of a shooting dog stake is as per the NRSFTC's definition of standard for the Champion. All breed trials I attend are run this way. Most shooting dog trials don't permit other than going to a dog on point.  
 \* \* \* \* \*  
 Here and There - Cont'd from page 20

"Autumn Hills Penny", handled by Ed Schnettler to second in Open Shooting Dogs at the Northwest Association (Minn.) trial. Schmett swept the open derby, taking all three places, second with Dr. Strand's "Stoneyridge Chipewyan" and third with Pat Ryan's "Clancy O'Ryan." Same issue carries registration of Murcrest and Lindel pups.

Incidentally, the Schnett's Kate and Schnett's Festus litter are the only Irish nominated for the Sixth Annual National Shooting Dog Futurity. Why? The only Red Dog entered in the Dubuque (Iowa) trial took 3rd in the Amateur Shooting Dog owned by a non-member, Roy Falter. Anyone have that address? The 7/5 American Field issue has a dandy picture of Max Freer's "Dandy's Judy" with the Huron Valley I. S. Bird Dog Club writeup. Other winners include R. J. Tallon's "Cinnamon O'Kate", and Larry Barnes' "Darlbebar Jotunn O'Flynn." Same issue carries an interesting article by Herm David (p. 12) as he judged and reports the Maryland Winners Stake.

The Santa Caligon Club's April trial is reported in the 7/12 issue, with "Autumn Hills Penny" taking second in Open Shooting Dog and first in I.S. Open Shooting Dog. Joe Reed's "Vanita Wild Gael" was second and Dr. Dan Kelly's "Schmett's Darky" third. Other members winning were: Puppy - L. R. F. Pierce's "D-Mar's Joyful Maggie", 3. Dwight Haddock's "D-Mar's Little John". Derby - L. Roger Strand's "Stoneyridge Chipewyan" 3. Al & Fran Roger's "C.C. McKenna". Why isn't Jim Barnes a NRSFTC member?



## REGIONAL CLUB NEWS

(A new column suggested by Bob Kerans. Club secretaries send us your news-trial dates, club events, who to contact to join, interesting items, etc.)

### ILLINOIS CLUB ORGANIZED

The Irish Setter Field Trial Club of Illinois had its organizational meeting on Sunday, June 22, with over 50 interested Irish Setter people in attendance. They are officially organized with the following persons elected as directors: Ron Gann, President; Bob Kerans, Sec.-Treasurer; and directors: Dave Masters, Don Novak and Eldon Bigham. Their immediate plans are to promote the club, sponsor a fall and spring field trial, (two day event, open breed Saturday, Irish Sunday, Purse divided on Saturday,) and plan on sponsoring field trial training days for members to bring them into the field trial wing. Dues are \$5.00 a year, field trials will be run under the American Field standards; and enthusiasm is reported to be very high. Anyone interested in joining should contact Bob Kerans, Barn House Kennels, R.R.1, Newton, Illinois 62448.

President Gann writes: We are looking forward to really getting on our feet this year. The organization is supported by many enthusiastic Irish owners. Our present membership is composed primarily of inexperienced field trialers with just a few "ole hands" around to help show us how. Be as it may, we are all going to be in there "pitching" to learn and to provide each other with knowledge and techniques of handling the hunting Irish as we strive to promote him afield. As a prime objective, we hope to contribute to the skill and knowledge of breeding and training better "Red Setters." We hope to develop new ideas, new plans, and new approaches that we may share with our associates. Then, perhaps we may eventually perpetuate these dogs to the position they rightfully should possess. That is, as an equal and true competitor with any pointing breed of dog. We are planning a Fall trial in October and hope to see some of you there.

PLAN NOW TO ATTEND THE NRSFTC FALL CHAMPIONSHIP AND SUPPORTING STAKES, NOVEMBER 8-9 KILDEER PLAINS, OHIO

-24-

### FIELD TRIAL CHAIRMAN BILL CARGO REPORTS:

1. With the problem at Kildeer and consideration of alternate sites, I thought it might be interesting to find the most central location for the Jan. 1969 membership list. This point to be where, if all members attended, the total mileage of the total membership would be minimum. The point could be called the center of gravity.

This, of course, can not be the only consideration for selecting a site. Use of the Red Setter population run in field trials might be more meaningful. The extremely successful trial held at Hawfield this spring shows the support for a trial in this area, and even though a more central location was used, the trial support might not be as good.

We have members in 38 States and two Provinces of Canada. The most central point would be near Champaign-Urbana, Ill. If 14 members in California, Oregon, Washington, Alberta Canada, Utah, Idaho and Wyoming are not included, then Indianapolis, Indiana is the most central point.

53% of the membership is concentrated in 10 States:

1 - Minnesota - 16 Members	5 - Kansas - 8 Members
2 - Illinois - 13 "	Missouri - 8 "
3 - N. Carolina - 11 "	8 - Indiana - 7 "
4 - Ohio - 10 "	9 - Virginia - 6 "
5 - Penna. - 8 "	New York - 6 "

The most central point for these members is about at Kentland, Indiana.

Half-way on the Illinois-Indiana State line is a good average for all three of these locations, and not far from any.

2. I stopped at Kildeer Plains yesterday afternoon. The State has let the contract for the new horse barn and Kennels. The contractor has started to work on these facilities.

The National Guard has also moved equipment in, and they are scheduled to start working this Monday. They are to build 3 bridges and clear strips through some of the woods.

The State will start mowing in August. It looks like the grounds and facilities will be better than they have ever been before. Also stopped to talk to Youell Blair. Right

-25- (Continued on page 22)



INQUIRIES FROM, AND COPIES OF "THE WHIP" SENT TO:

Dale N. Anderson 1300 Central Ave., N.W. Valley City, N.D. 58074	Donald W. Larson R. R. #3 Champaign, Ill 61820	Elvis Watson Route 4 Lawrenceburg, Tenn. 38464
W. Larry Reed 169 Hollywood Blvd. Xenia, Ohio 45335	Jerry Haines 2006 W. 54th St. Minneapolis, Minn. 55419	George Nicholas Rt. #2, Box 46 Bensenville, Ill. 60106
Richard Horst 5426 Rainbow Drive East Petersburg, Penn. 17520	Mr. & Mrs. Scovers R. D. #1 Millerstown, Pa. 17062	James R. Cook 1134 Glade Hill Dr. Knoxville, Tenn. 37900
John T. Miner Sprucedale Kennels R. R. #2 Kingsville, Ontario	Terry Sallee 9496 Singleton Dr. Bethesda, Md. 20034	Larry Williams Rt. 2, Box 262 Maverly, Ohio 45590
Steve Earnest Moonshine Kennels 300 Guadalupe Cir. N.W. Albuquerque, N.M. 87100	Ronald Simpson 3008 12th St. N.W. Albuquerque, N.M. 87100	Marly's Earl, Box 256 Ashton, Iowa 51232
Gary Ping Ireton, Iowa 51027	Tom Davis 2543 Lakeport Sioux City Iowa 51100	Howard Dicke 3237 Viking Drive Sioux City, Iowa 51100
Mervin Peterson Box 145 Alta, Iowa 51002	Glen Mannes 3407 Concordia Dr. Sioux City Iowa	Ronald Wedhe 15 N. 25th St. Denison, Iowa 51442
J. A. Taylor 225 Hillside W. DesMoines, Iowa 50265	Robert Rupp 3101 Viking Dr. Sioux City, Iowa 51100	Robert Stevenson Riverside Kennels Orleans, Neb. 68964
Diane Lloyd 10852 S. 20th East Sandy, Utah 84070	Melvin Lewis Herriman, Utah	R. M. Lewis 2120 Cheltenham Blvd. Greensboro, N.C. 27407

-26-

Ask Your Vet - Cont'd from page 2

Hard working dogs can digest rations containing up to 50% fat.

Worms are caused by worm eggs-or we all would be infested. Garlic may repulse worms, or anyone else, but it is doubtful if it has any killing effect. Dogs are constructed to gulp their food. Their mouths are built for rending and tearing, not chewing. They have digestive juices that take care of breaking down foods. Ask any veterinarian about it. They have all seen a beaker of digestive juices from a dog cause a piece of meat to dissolve. Hard foods and bones do help to remove tartar from a dog's teeth but a bone may also splinter, break a tooth, and either lodge in the dog's throat or puncture the intestine. Tartar is very easily scraped from the teeth by you with a stick. No dangers involved. All breeds of dogs, canis familiaris, have the very same basic nutritional requirements whether a Great Dane or Chihuahua. The quantity may vary from a few teaspoons to 10 pounds daily but the content, vitamin and mineral-wise, must be fundamentally sound.

It was not too many years ago that the general feeling toward dog diet was "what's good enough for me and my family is good enough for my dog." Table scraps were the sole diet of a majority of pets. With the advent of serious breeders there simply were not enough table scraps to feed the dogs at some homes. This provided the basic foundation for the dog food industry, once the neighborhood grocery had been run out of meat scraps. This industry had to compete within itself and much of importance has been learned from the different company's research programs. An entirely new concept of what a dog needs to be healthy has come about in the last ten or fifteen years. The present trend is exactly opposite that of fifty years ago and now a new threat has arisen: OVER SUPPLEMENTING. In the event that it is not actually dangerous for the dog it is frequently wasteful for the owner.

A good sound basic diet for a dog is comparatively easy to achieve with any of the Brand Name dog foods on the market. They all have their ingredients listed on the label. There are some better than others. I don't think you will get all you desire in a food costing \$4.00 a hundred pounds or \$0.06 a can. There is no doubt that it will cost you a little money to feed your dog properly. From the list of contents you can learn what the food lacks. If you

-27- (Continued on page 28)



Ask Your Vet - Cont'd from page 27  
find some basic deficiency you may feel it is to your benefit to supplement the food. Also if there is some deficiency in your dog's body such as vitamin A, you may want to supplement the amount of this vitamin in the food you are using. This is where the danger comes in. If you are using a high vitamin A content food, one with double the normal minimum daily requirement you are just wasting money to use a Vitamin A supplement. If you are using two or three supplements, all with a high vitamin A content, you may actually cause your dog a great deal of harm. An excess of vitamin A will eventually cause optic neuritis and lead to blindness. Many of the other vitamins and minerals have damaging effects if given in too great a quantity. The ideal situation is to use a supplement that supplements. Two additives may counteract each other and produce no change or they may combine to produce an undesired effect. Another of the errors commonly made is the use of vitamin D. This is a necessary item as far as the dog's body is concerned but the dog will produce sufficient vitamins D for himself in 9 out of 10 cases. An overdose of vitamin D will eventually lead to calcification of the joints and arteries.

The best policy would be to find out what your dog needs, what your food contains and how to supplement it wisely. Then do so.  
\*\*\*\*\*

#### NEW MEMBERS

Donald P. Novak  
1231 Bon Air Court  
Decatur, Ill. 62521

Randy Caswell  
703 Park Row  
Americus, Ga.  
31709

John D. Lowe  
2813 Bamboo  
Mesquite, Texas 75149

Dennis Wainwright  
P. O. Box 407  
Grand Prairie,  
Texas 75050

Mike Presley  
741 Greenland Way  
Grand Prairie,  
Texas 75050

Ron W. Radke  
2727 Greenhill  
Mesquite, Texas 75149

John M. Queally, HT2, USN  
HQ. BN. BAS  
1st Mar. Div. (REIN) FMP  
F. P. O. San Francisco  
Calif. 96602

Mike McMurray  
89 Wheeler St.  
Deposit, N. Y.  
13754

David G. Stout  
810 Floretta D. N.W.  
Albuquerque, N. M.  
87107